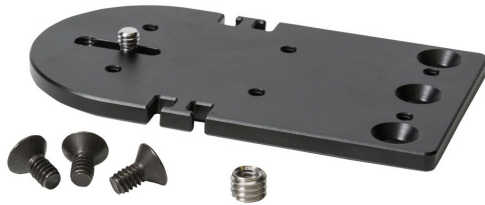
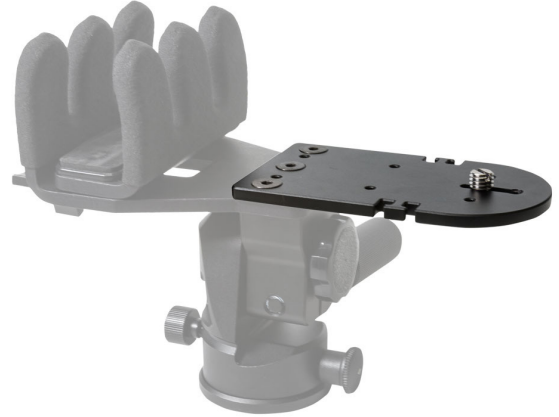


KOPFJÄGER

REAPER RIG ACCESSORY PLATE



**HEAVY DUTY
CONSTRUCTION**



KJ89002

REAPER RIG ACCESSORY PLATE

TECHNICAL SPECIFICATIONS

REAPER RIG ACCESSORY PLATE

KJ89002

DIMENSIONS, (IN/MM)	4.87 x 2.7 x .23 / 124 x 68 x 6
FEATURES	MOUNTS ACTION CAMERA OR SPOTTING SCOPE TO REAPER GRIP. CAN ADD PICATINNY MOUNT FOR IR FLASHLIGHT OR LASER.
FOOT MATERIAL	ALUMINUM
WEIGHT (LBS/GR)	.25 / 120

INCLUDES: CAMERA SCREW, THREE MOUNTING SCREWS

KJ89002